

Putukaväila huvigruppide kaardistus

Pollinator Highway
Stakeholder Mapping
2020



EUROPEAN UNION
European Regional Development Fund



Putukaväila projektiala

The Project Area

Putukaväil kulgeb ca 13,5 km pikkusel trajektoorigi piki tänast kõrgepingeliinide koridori ja endist raudteetammi läbides 3 linnaosa ja piirnedes 3 linnaosaga.

The Pollinator Highway spans 13,5 kilometres along a former railway dam and today's transmission tower corridor through 3 districts of Tallinn while bordering another 3 districts.

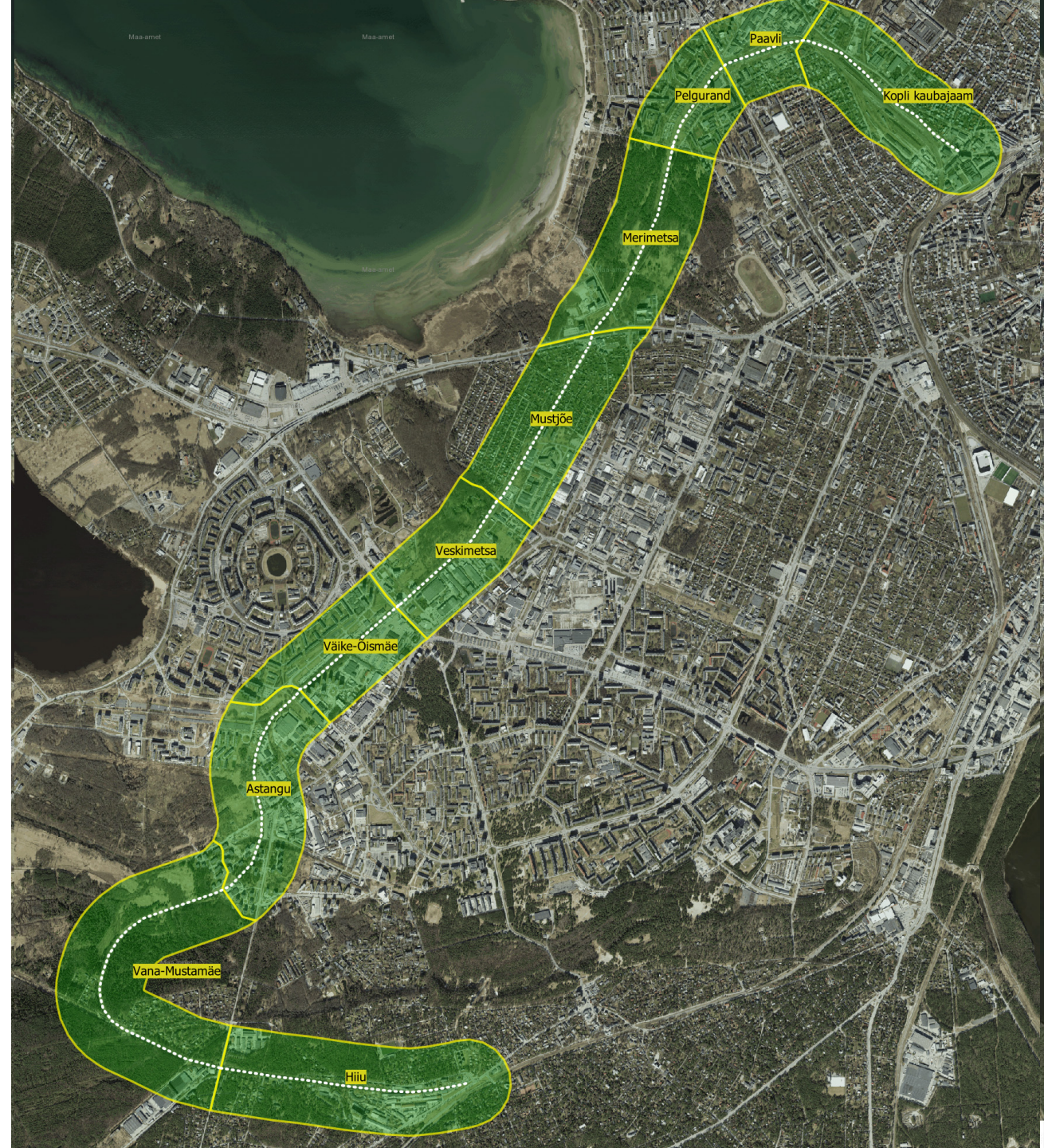


10 omanäolist ruumiosa

10 Distinctive Spaces

Uuring käsitleb Putukaväila 300 + 300 m laiuse ruumikoridorina, mis on jagatud - lähtuvalt täna esinevatest linnaruumilistest katkestustest - 10 ruumiosaks.

Pollinator Highway is studied as a 300 + 300 metres wide green corridor, which is divided into 10 spaces based on strong spatial dividers that exist today.

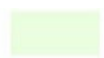


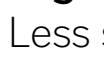


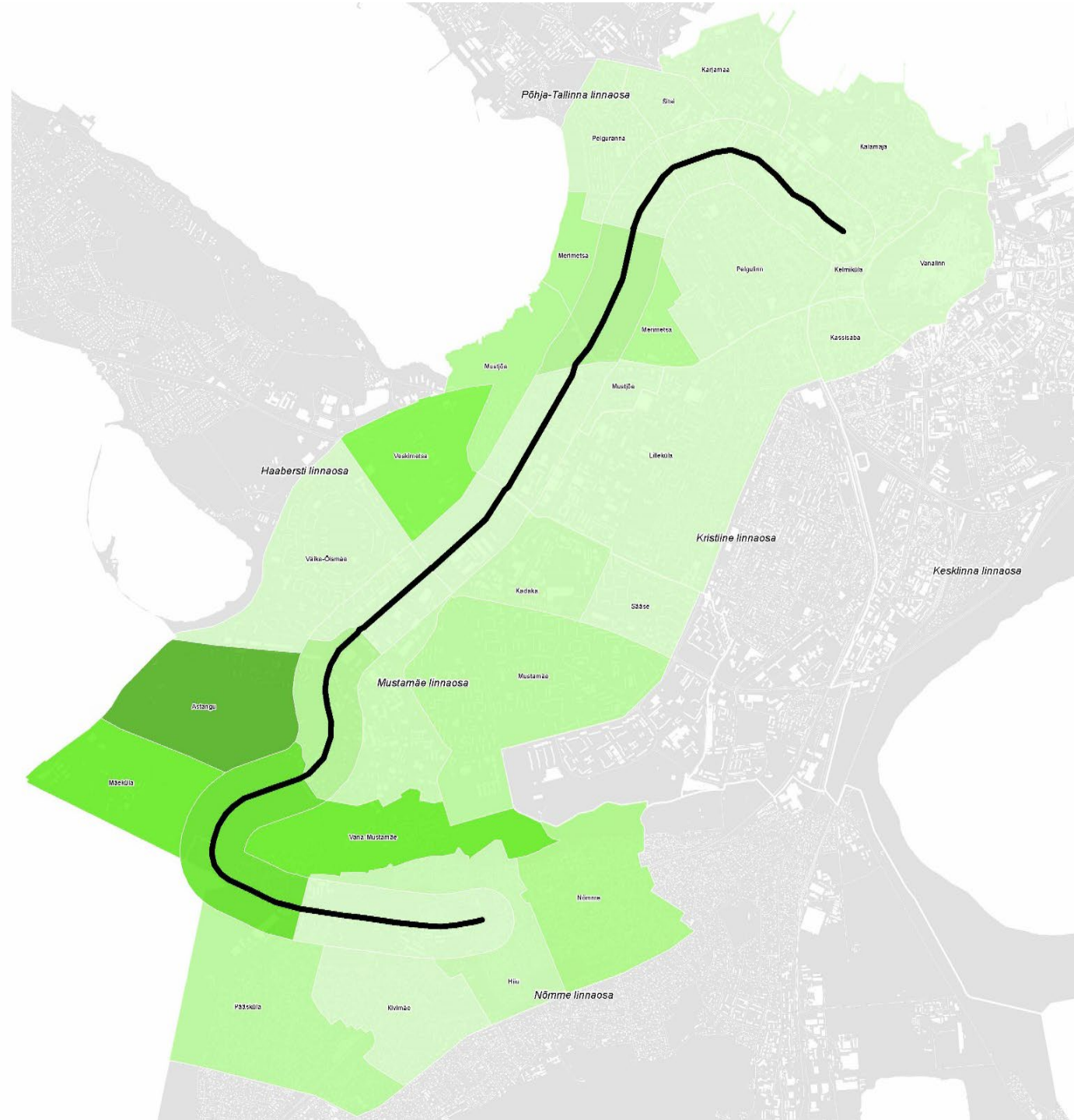
Elu- ja liigirikkus

Species-richness

Liigirikkamad piirkonnad
Putukaväilal ja selle lähialal on
Astangu, Mäeküla, Vana-Mustamäe
ja Veskimetsa asumid.

The most species-rich areas on and
near the Pollinator Highway are
Astangu, Mäeküla, Vana-Mustamäe
and Veskimetsa subdistricts.

-  Liigivaesem keskkond
-  Less species-rich environment
-  Liigirikkam keskkond
-  Remarkably species-rich environment



Elanikud & ärid Putukaväilal ja selle mõjupiirkonnas

Residents & Businesses on the Pollinator Highway & Its Buffer Zone

Ca 40% Tallinna elanikkonnast elab Putukaväilast kuni 30 minutilise jalutuskäigu kaugusel.

Ca 40% of the residents of Tallinn live within a 30 minute walking distance to the Pollinator Highway.

Ca 175 000
elanikku: ~ 40%
Tallinna
elanikkonnast

Ca 175 000
residents: ~ 40%
of the population
of Tallinn

Üle 200 avaliku
asutuse

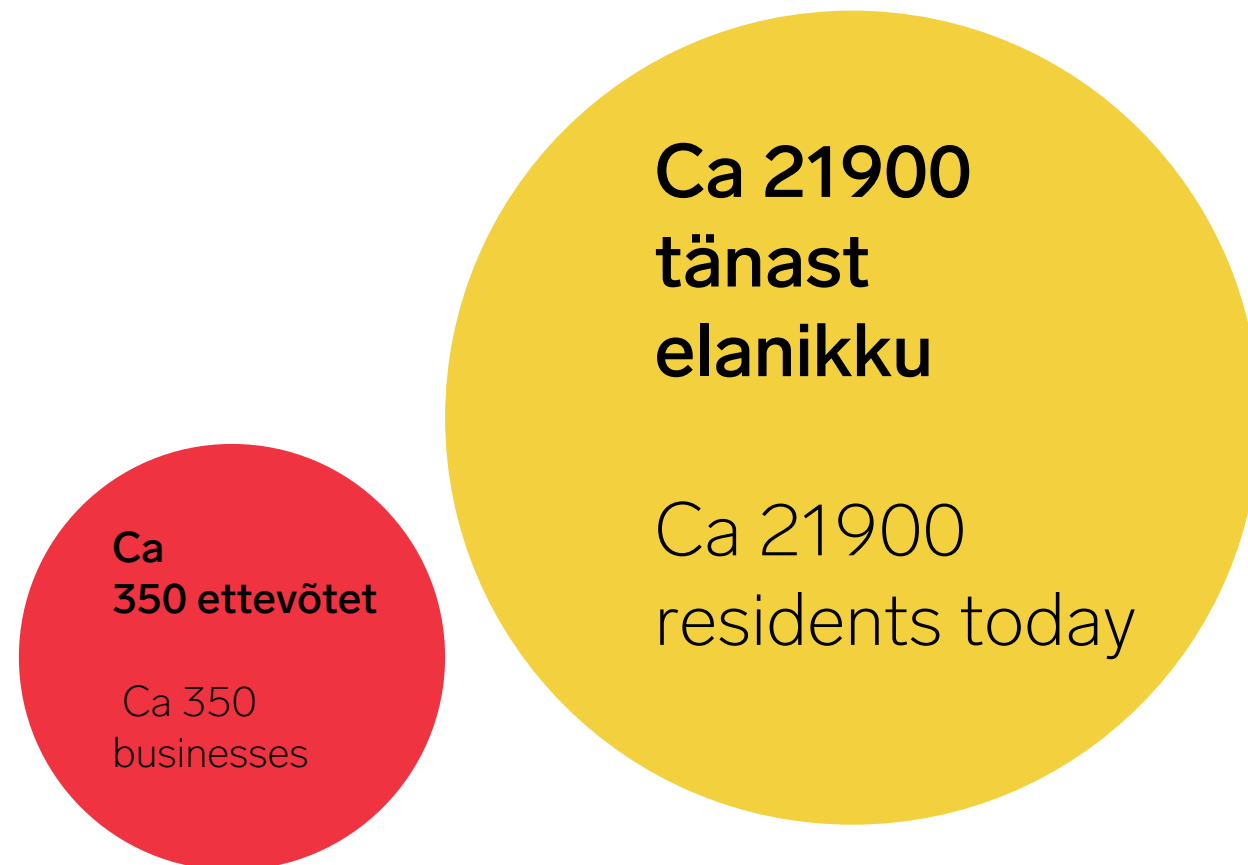
More than 200
public function
establishments

Elanikud & ärid Putukaväilal ja selle mõjupiirkonnas

Residents & Businesses on the Pollinator Highway & Its Buffer Zone

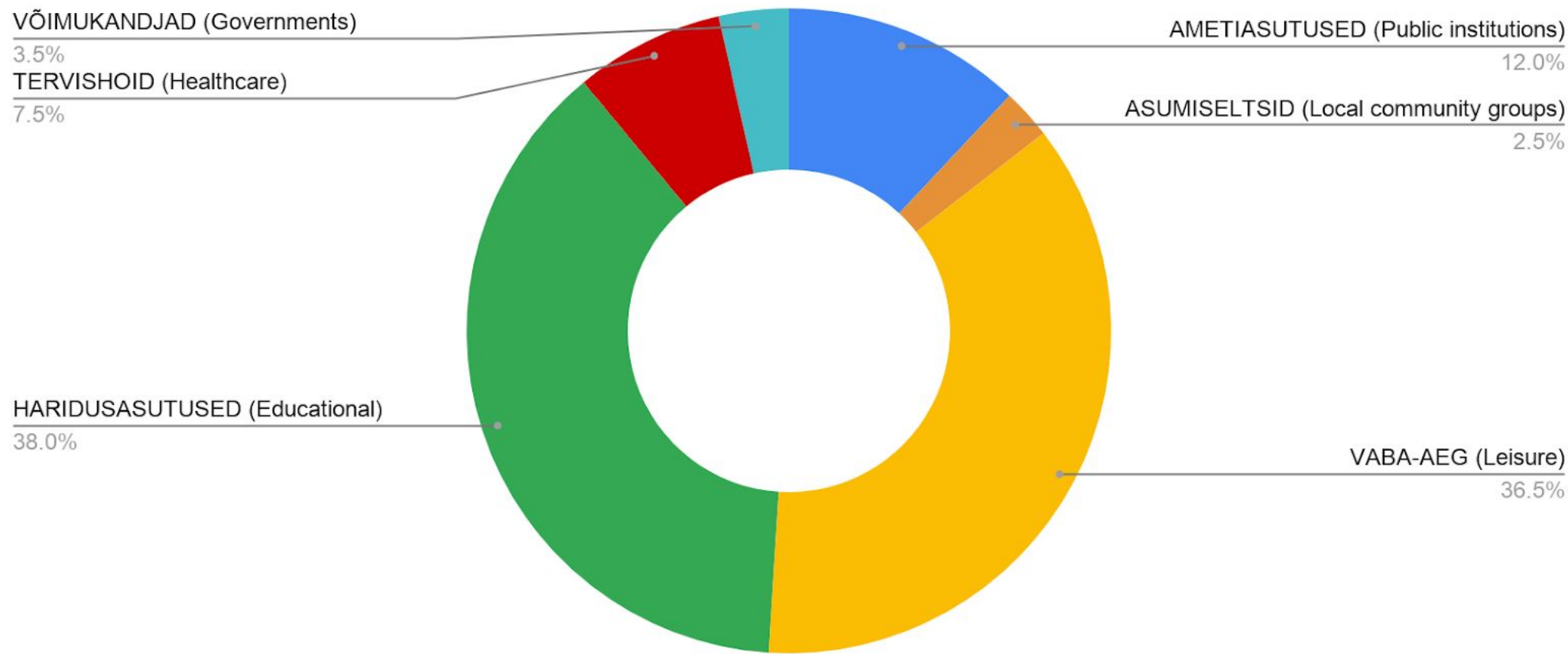
Planeeritud arendusmahtude realiseerumisel lisandub Putukaväila lähiümbrusesse järgmise 10 aasta jooksul ligikaudu **7500 elanikku**.

If planned developments are realized, **up to 7500 new residents** will move to the area over the next 10 years.

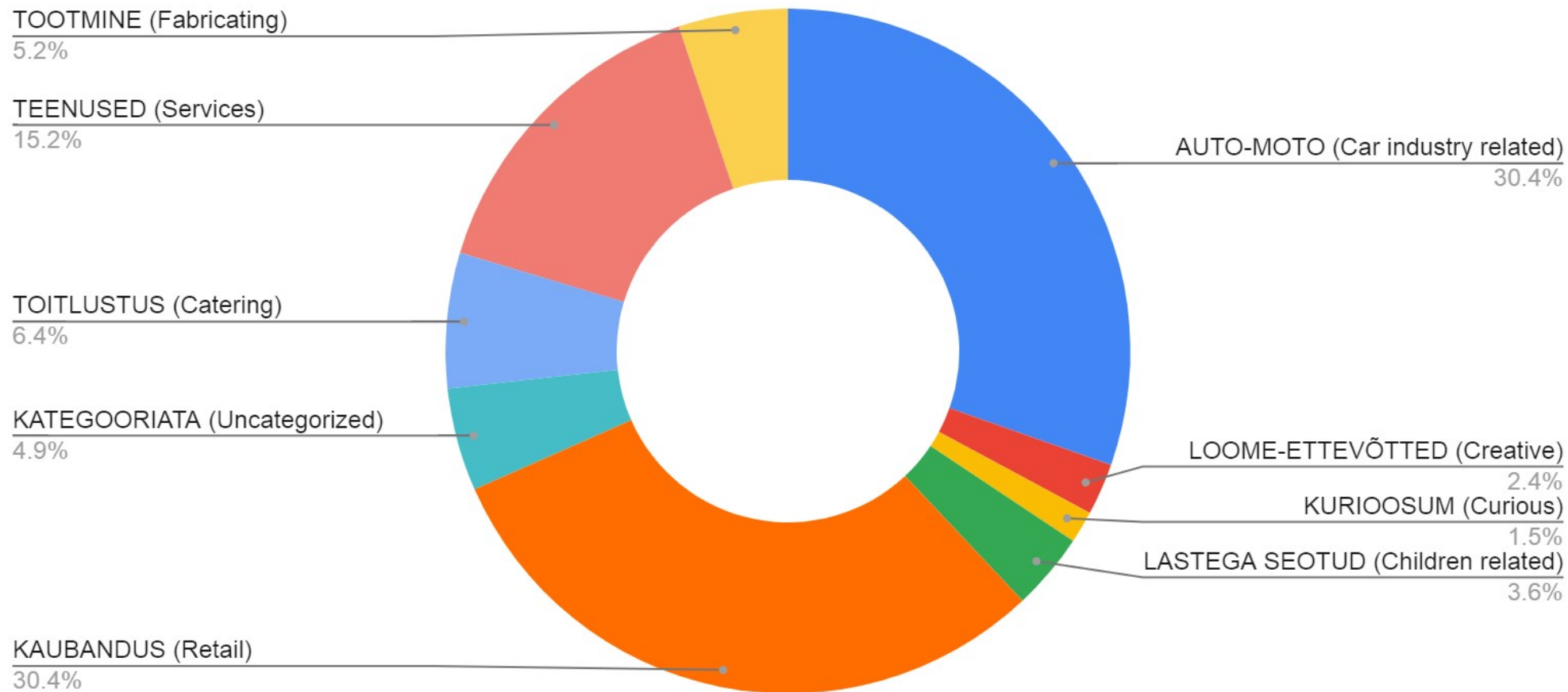


Avalikud asutused

Public Function Establishments

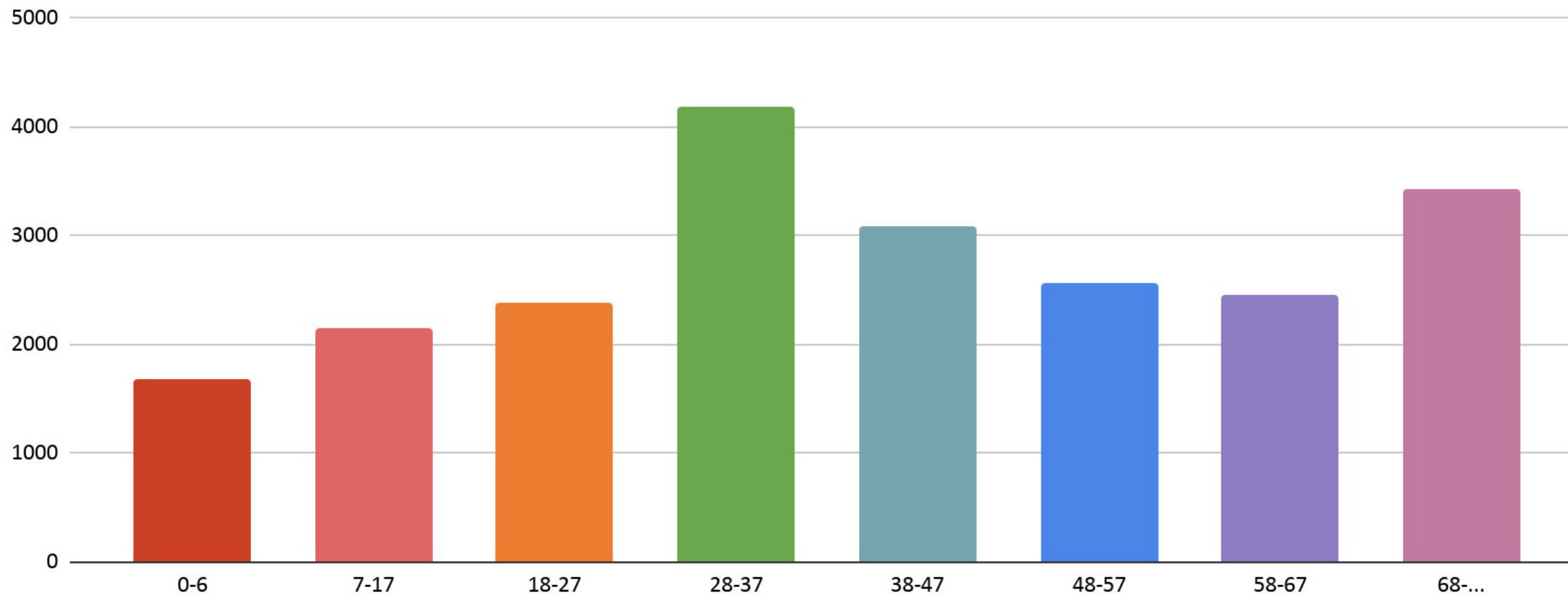


Ärid ja ettevõtted Businesses



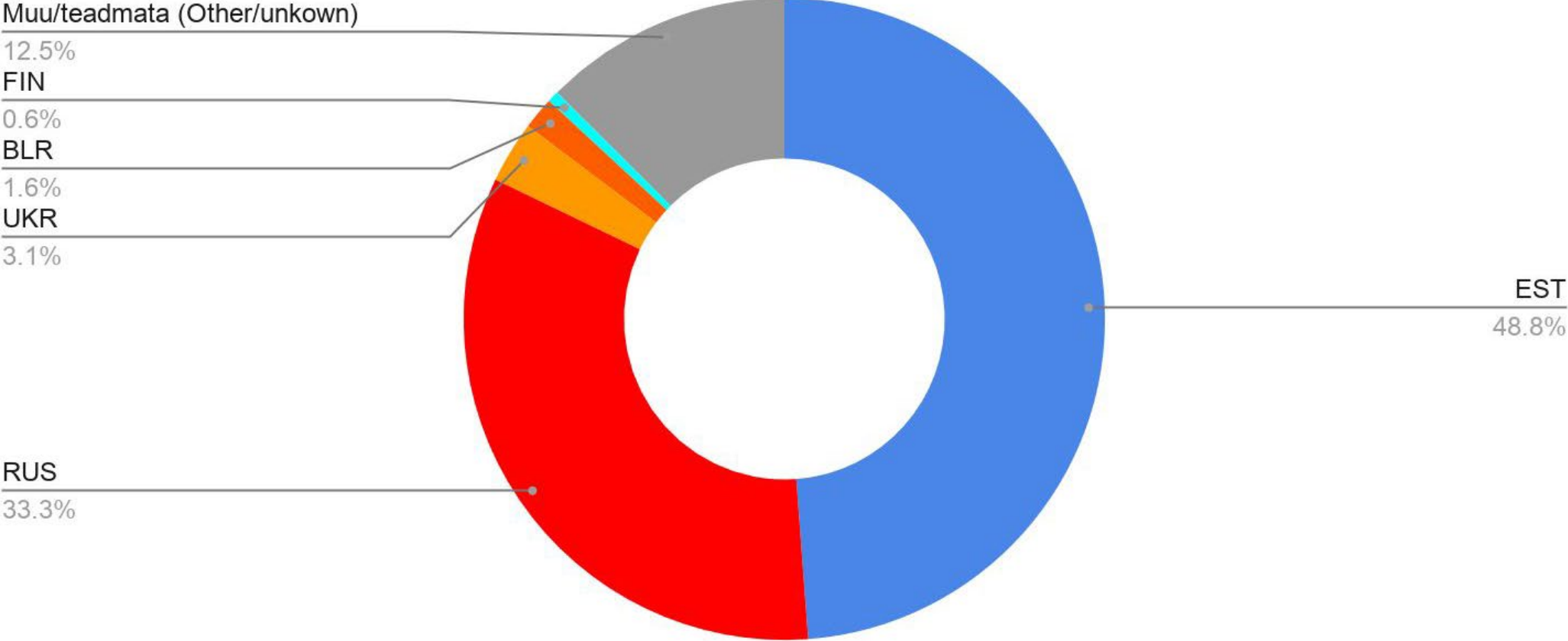
Elanike vanus

Residents by Age Groups



Elanike rahvus

Residents by Nationality

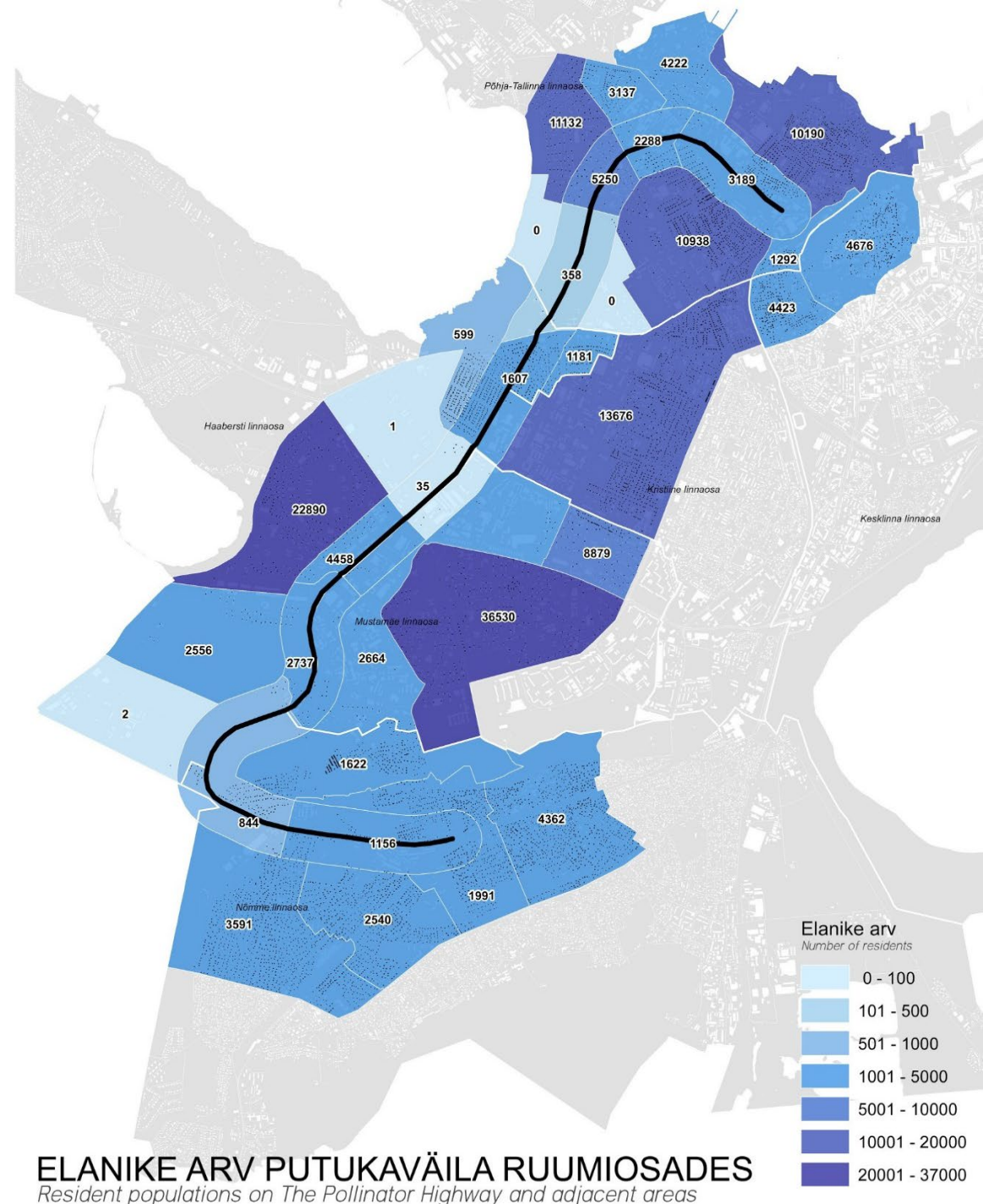


Elanike arv ruumiosades

Resident Populations on the Pollinator Highway & Adjacent Areas

Valdav osa Putukaväila potentsiaalsetest kasutajatest elab Mustamäe, Väike-Õismäe ja Pelguranna korterelamualadel, Kristiine väikeelamu- ja segahoonestusalal ning Kalamaja ja Pelgulinna korterelamualadel. Tihedalt asustatud piirkonnad vahelduvad looduskesksete aladega (Astangu, Veskimetsa ja Merimetsa), kus inimasustus on vähene või puudub.

The majority of the potential users of the Pollinator Highway live in apartment building areas of Mustamäe, Väike-Õismäe and Pelguranna districts, in the small residential building and mixed building areas of Kristiine and in the apartment building areas of Kalamaja and Pelgulinna subdistricts. More densely populated areas alternate with natural areas (Astangu, Veskimetsa and Merimetsa) with little or no human settlement.

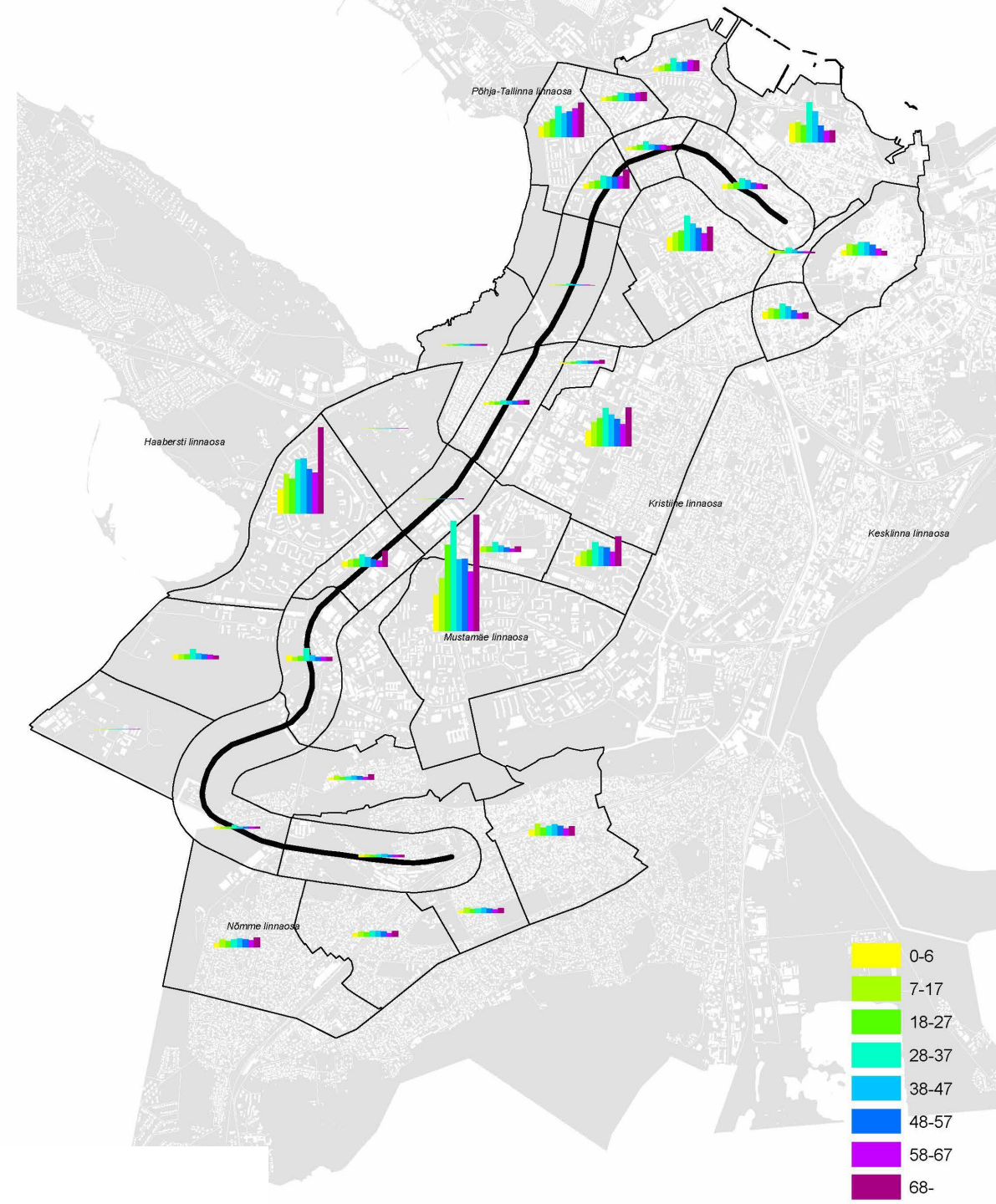


Elanike vanuseline koosseis

Residents by Age

Putukaväila mõjupiirkonnas on hästi esindatud kõik vanusegrupid; nõukogudeaegse ehituspärandiga korterelamualadel joonistub välja eakam elanikkond.

All age groups are well represented in the buffer zone of the Pollinator Highway. Older population groups are more strongly represented in Soviet-era apartment building areas.

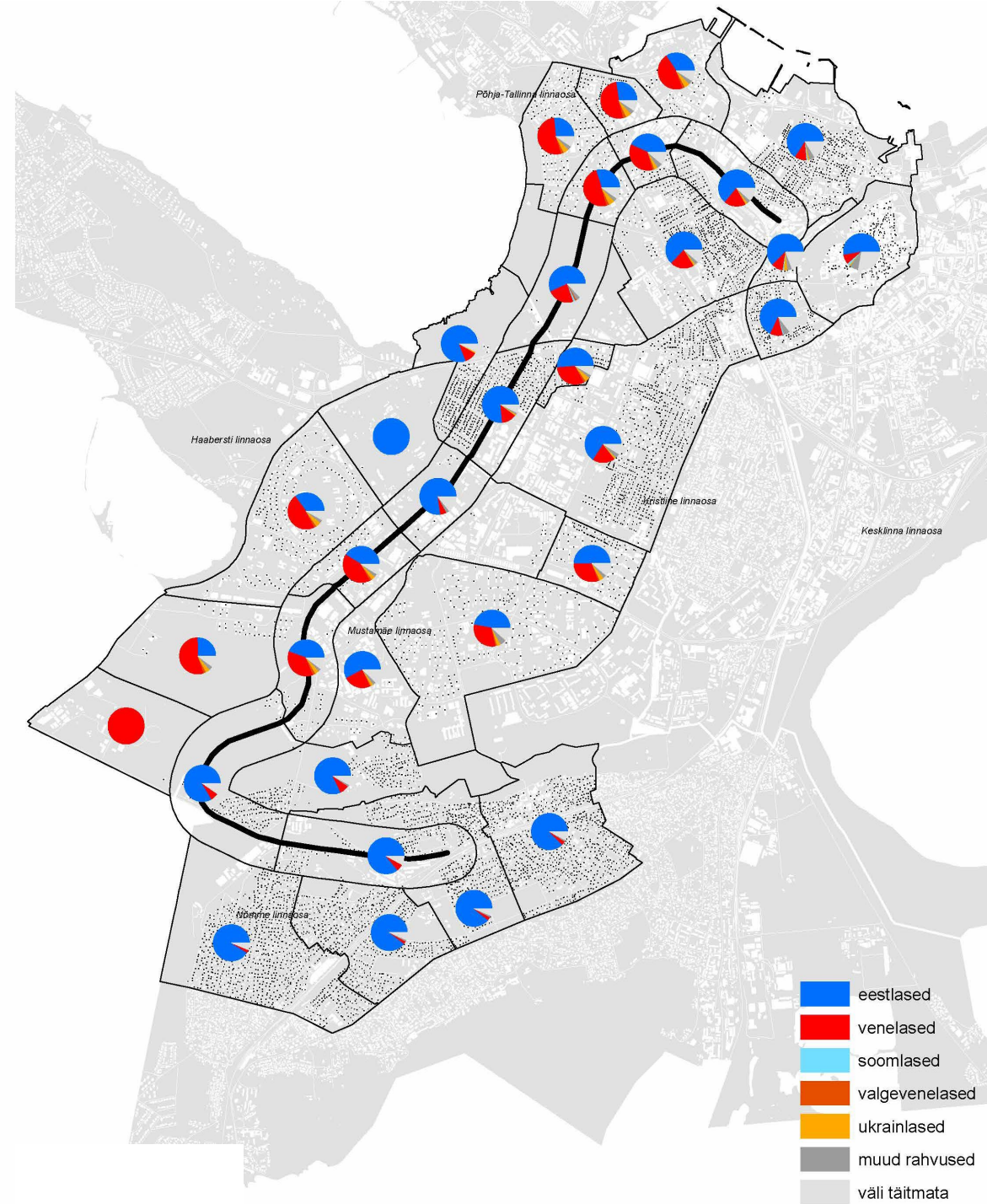


Elanike rahvuskoosseis

Residents by Nationality

Pere- ja väikeelamualadele, kesklinlikele ja kesklinnalähedastele korterelamualadele on iseloomulik valdavalt eesti emakeelega elanikkond. Suurem venekeelse elanikkonna osakaal on iseloomulik kesklinnakaugematele nõukogudeaegse ehituspärandiga korterelamualadele. Muu emakeelega elanikkonna osakaal on väike.

Single-family home and semi-detached housing areas as well as apartment building districts close to the city center are characterized by a predominantly Estonian-speaking population. A larger share of Russian speakers is characteristic to Soviet-time panel housing districts situated at a distance from the city center. The share of other nationalities represented is small.



Elamute tüpoloogia

Housing Typology

90% Putukaväila möjupiirkonna elanikest elab kortermajades.

90% of the residents living within the Pollinator Highway buffer zone reside in apartment buildings.

118 **Elamute arv**

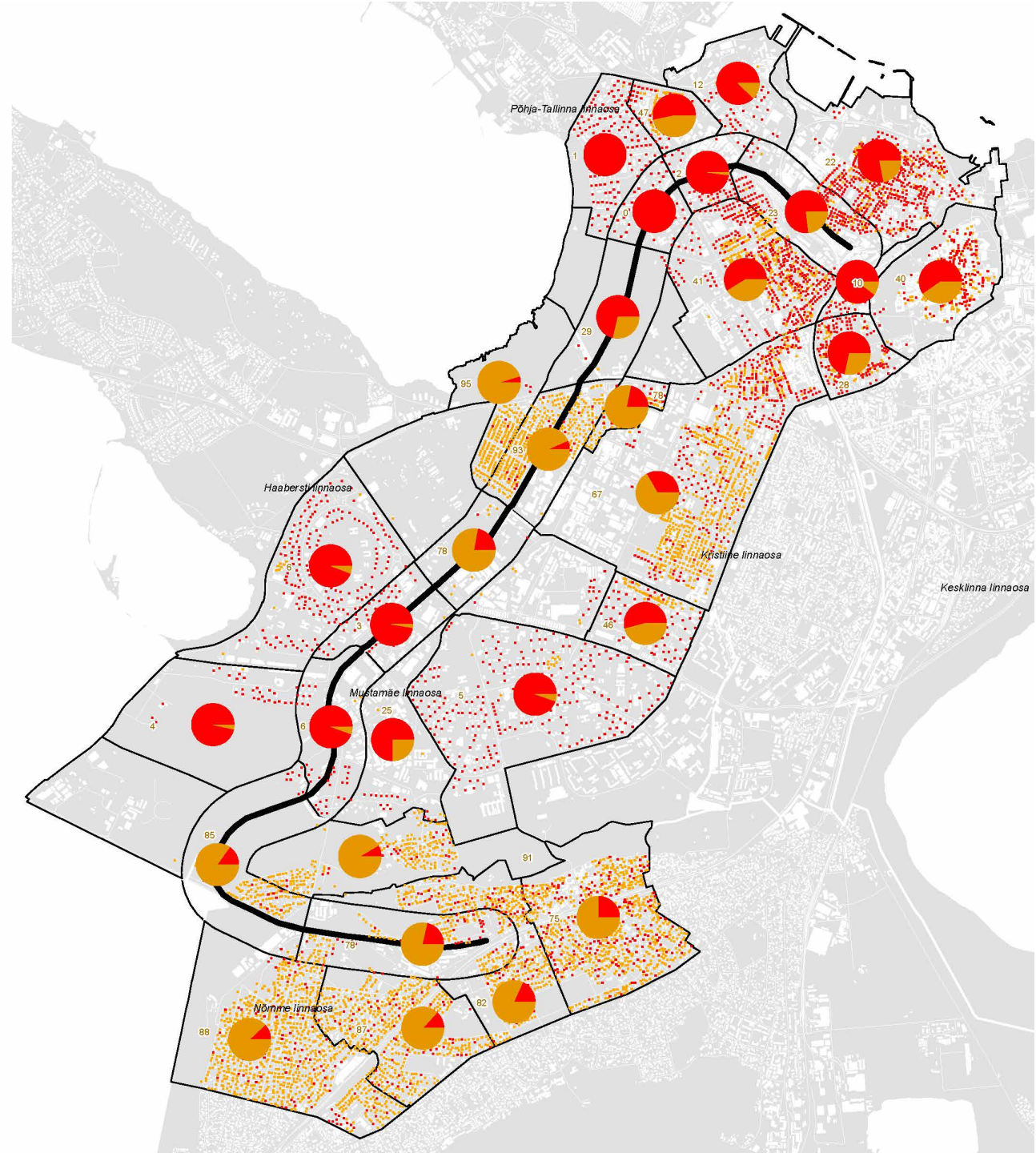
Number of residential buildings

 **Pere- ja väikeelamud**

Single-family homes and semi-detached housing

 **Kortermajad**

Apartment buildings

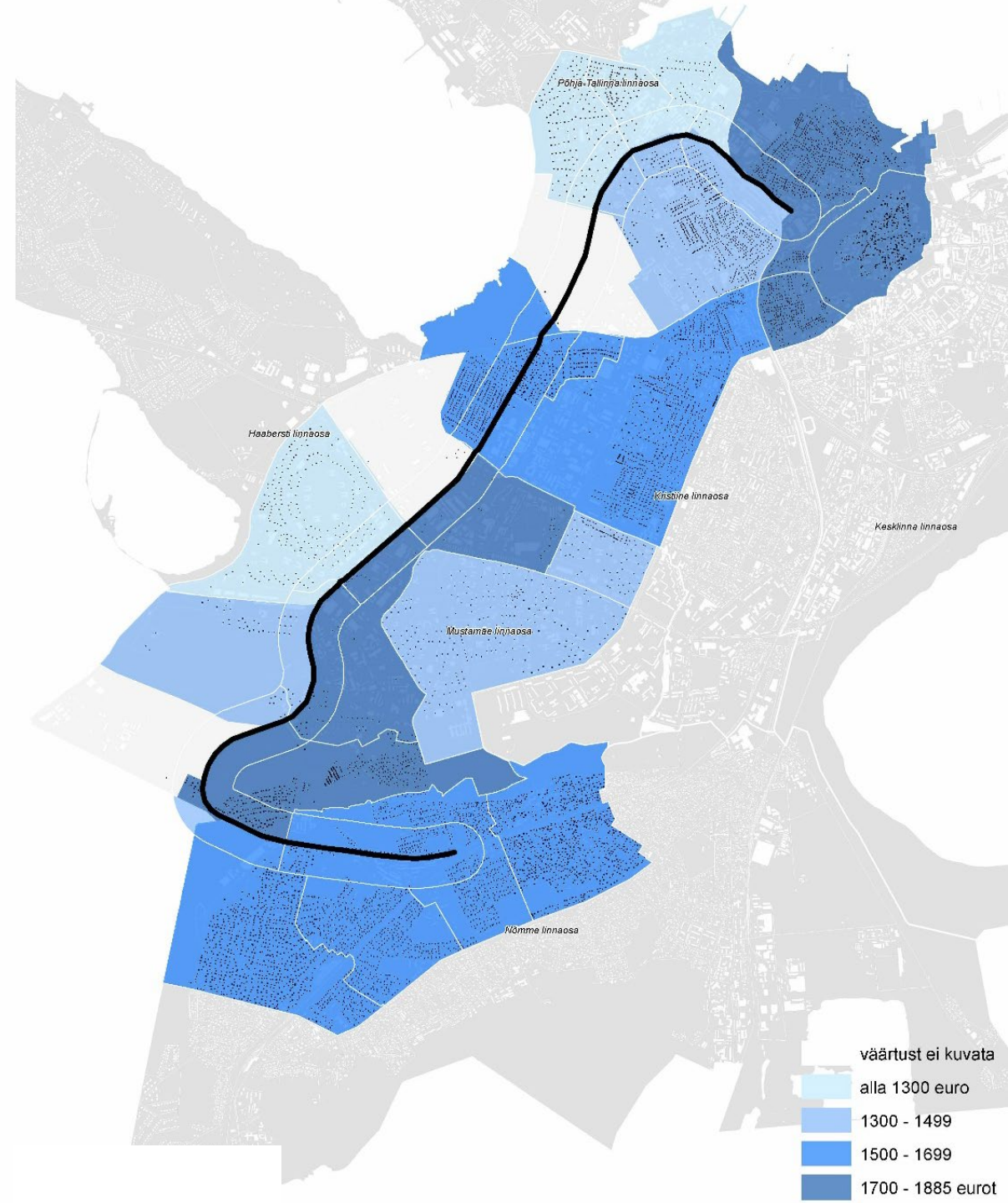


Elanike sissetulek

Residents by Income

Suurema sissetulekuga elanikud on koondunud eramajade ja kesklinnalähedaste või kesklinlike asumite piirkonda.

Residents with higher income reside mainly in the single-family home areas, semi-detached housing areas as well in apartment building areas close to the city centre.



Perspektiivsed arendused Putukaväila mõjupiirkonnas

Prospective Development Areas in the Buffer Zone



Maaomand Land Ownership

Munitsipaalomandis ja riigi omandis
maad on potentsiaalsed alad
ruumisekkumisteks.

Lands in municipal or state ownership are
potential areas for spatial interventions.



Menetluses detailplaneeringud

Areas of ongoing detail planning processes



Sotsiaalmaak (linn)

Land of social function owned by the local municipality



Sotsiaal- ja maatulundusmaak, sihtotstarbeta maak

Land of social function owned by the state of Estonia



Vaata ka:

Putukavail.ee

Instagram: Putukavail



Mats-Laes Nuter & Olari Kärmas
Putukaväila projektitiim
Ruumilooime osakond
Tallinna Strateegiakeskus
putukavail@tallinnlv.ee